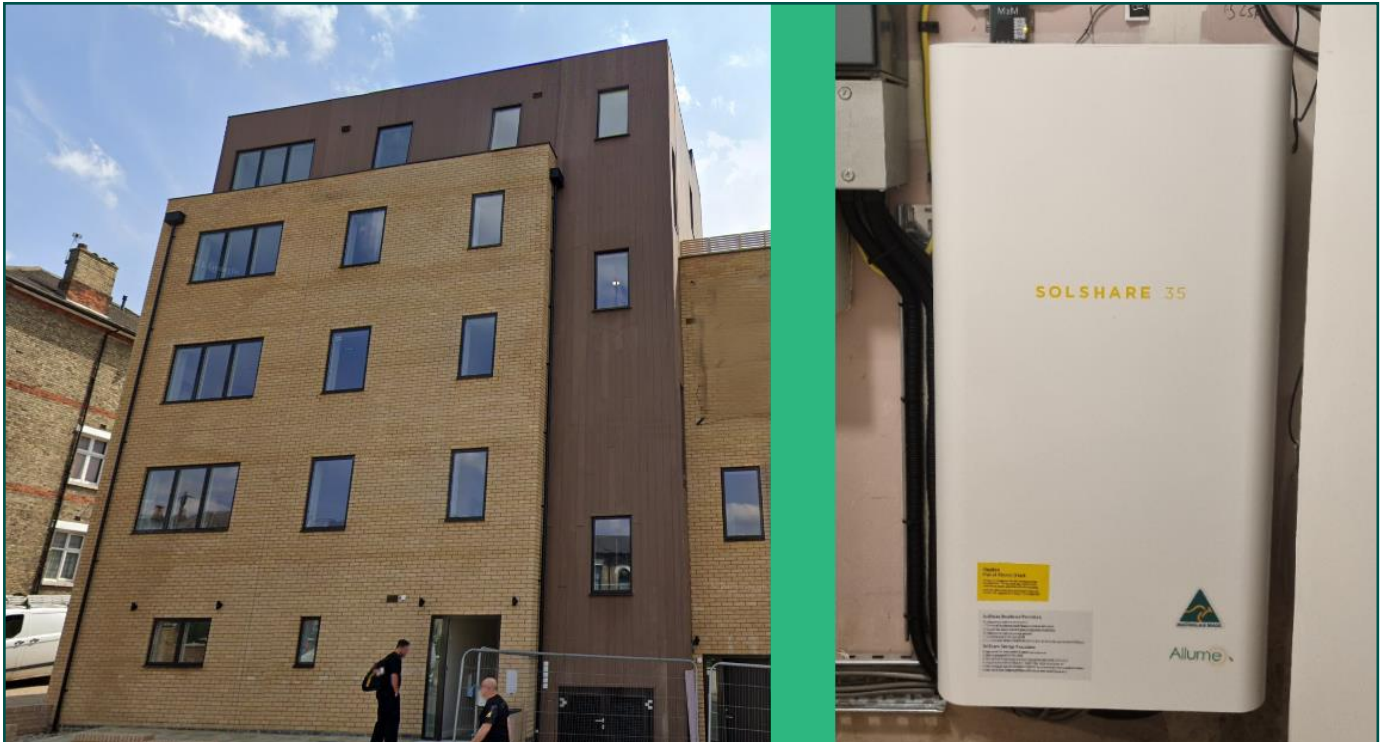


SolShare Case Study



The SolShare has been installed on a new build development in South London to supply 7 flats and the three-phase Landlord supply with rooftop solar energy. Having solar connected directly to the flats was a focal point of the marketing behind this development. With the SolShare, the developer was able to promote the benefits of solar energy to the individual flats, not just the Landlord supply.

South London, UK

Number of Connections:

**7 Flats +
Landlord Supply**

Estimated Yearly Bill Savings:

**£208 per Flat
£647 for Landlord**

Solar System Size:

10 kWp
(only 1 kWp per connection)

CO2 Offset Per Year:

2,000+ kg